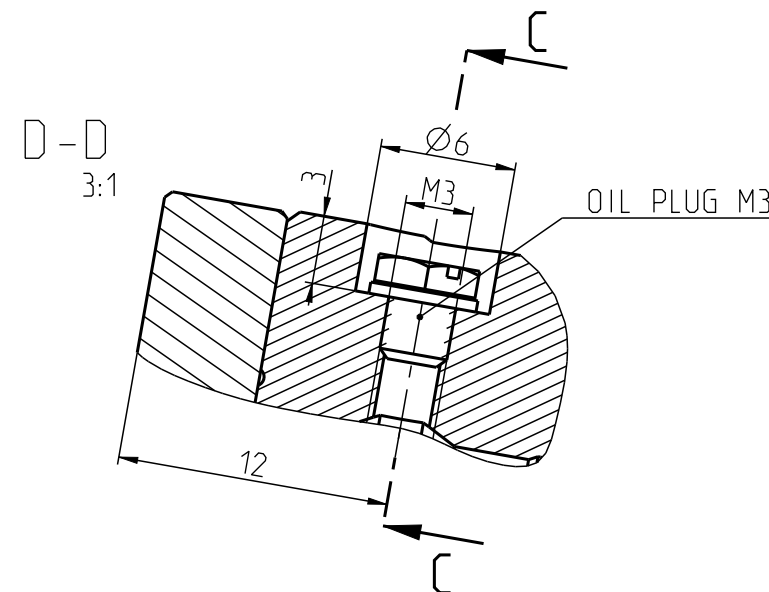
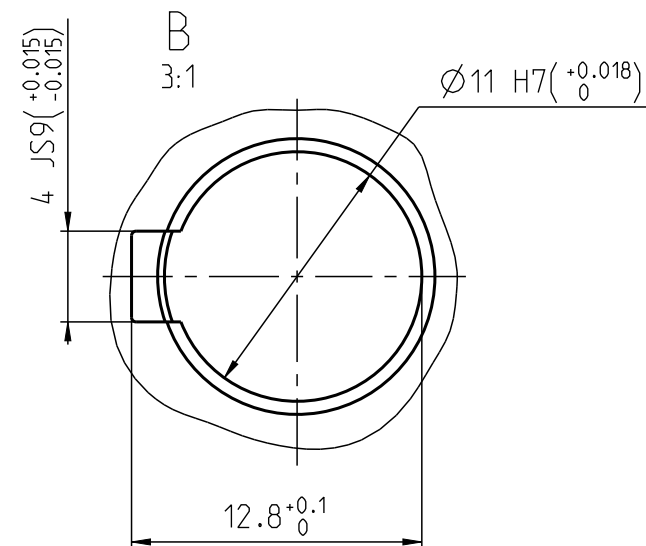
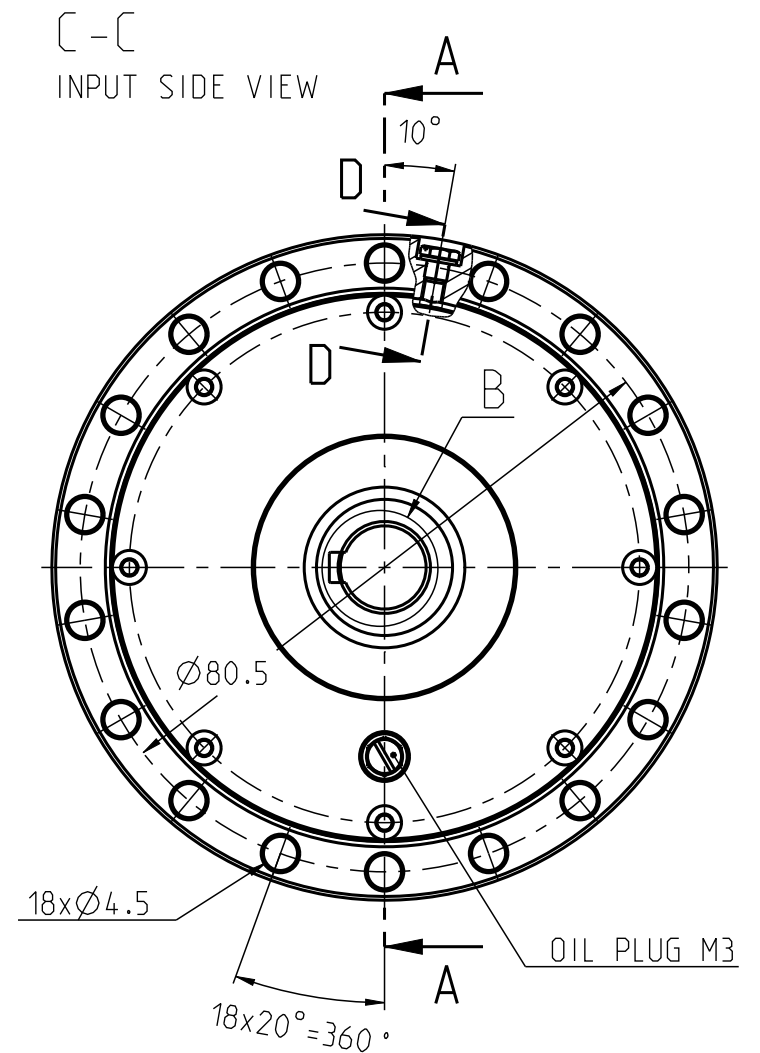
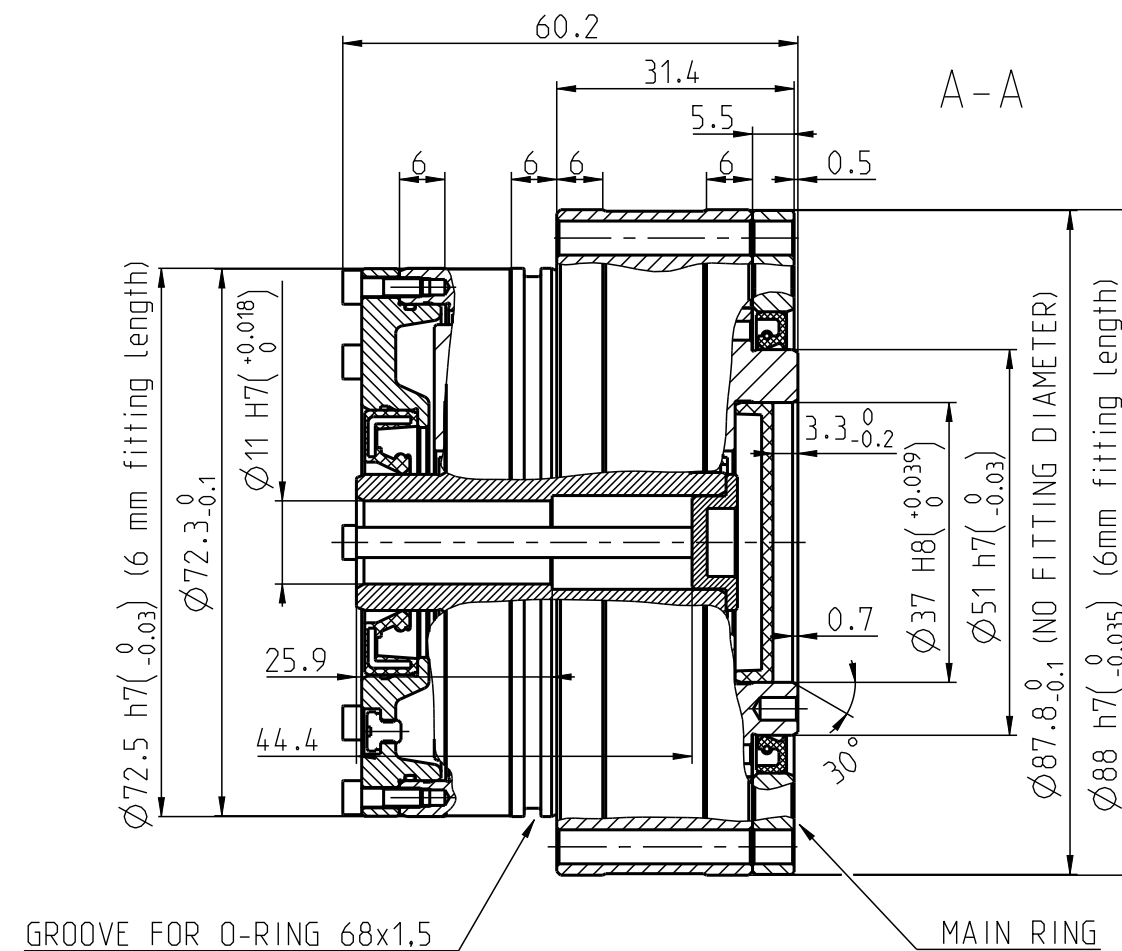
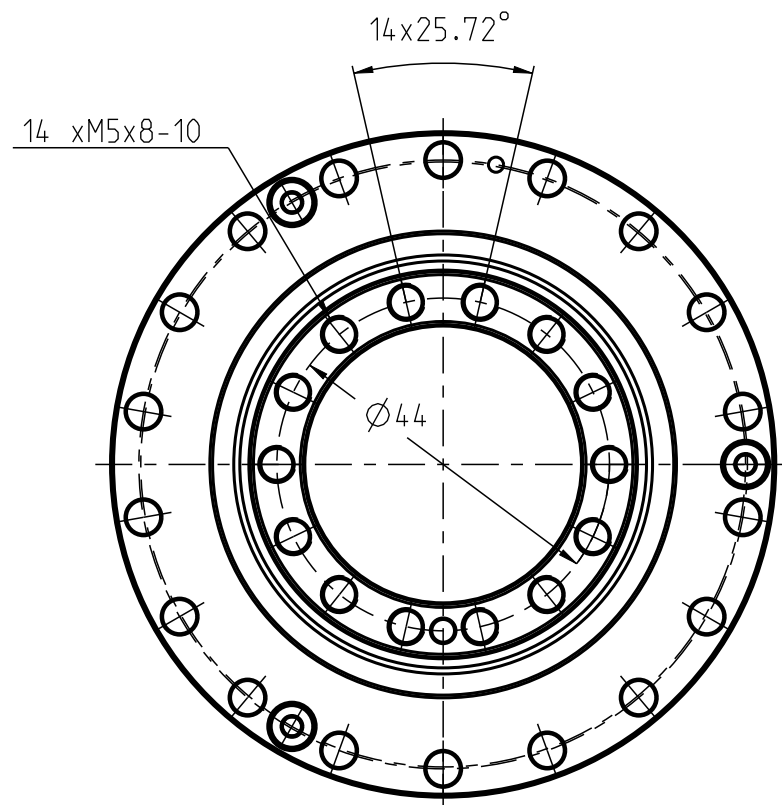


For this drawing we reserve all rights. Without our permission it may neither be copied nor made accessible to third persons.
All patent trademark and other right in this drawing and are expressly reserved by SPINEA Ltd.



*	Hriadelova Zátka/ Shaft Plug	Zátka/ Plug	Note/ Poznamka
A	So zatkou/ With plug	So zatkou/ With plug	Standard
B	So zatkou/ With plug	Bez zátky/ Without plug	Na požiadanie/ On request
C	Bez zátky/ Without plug	So zatkou/ With plug	Na požiadanie/ On request
D	Bez zátky/ Without plug	Bez zátky/ Without plug	Na požiadanie/ On request

Note:
- Main ring must be fixed in operation with
18pcs of SCREW M4 St 12.9, TIGHTENING TORQUE 5Nm

#	i	Poznamka/ Note
A	33	Standard
D	63	Standard
E	79	Standard

Vers/Revs	Change	Date	Signature
Material	-		
Semi-Product	- -	Pieces	-
Attachment		Techn.Prepared	
Design Prepared	Jackovic	20-Okt-20	Techn.Checked
Design Checked	Menyko		Confirmed
Manuf.Checked		Valid From	
TS 85-i-G-P11-0791*			TS 085G
Description		Type	

SPINEA EXCELLENCE IN MOTION			
Undimensioned Edges = 0.3x45°			
Intoleranced Dimensions - STN ISO 2768-mK			
Weight [kg]	1.796	Scale	1:1
		Position	-
Model Name/ Vers.	085_000G_P11_0791_P/ - .5		
Drawing Name/Vers.	085_000G_P11_0791_P/		
Sheet/Sheets	1/1	ARTIKEL	-
0-791 P*0 #00-3			-/-
Drawing-No		Vers/Revs	